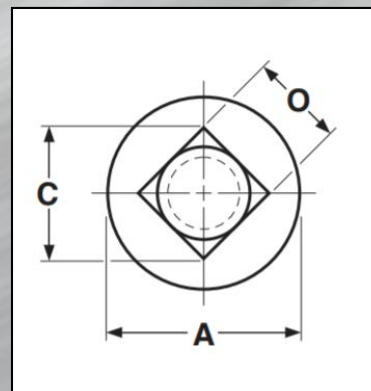
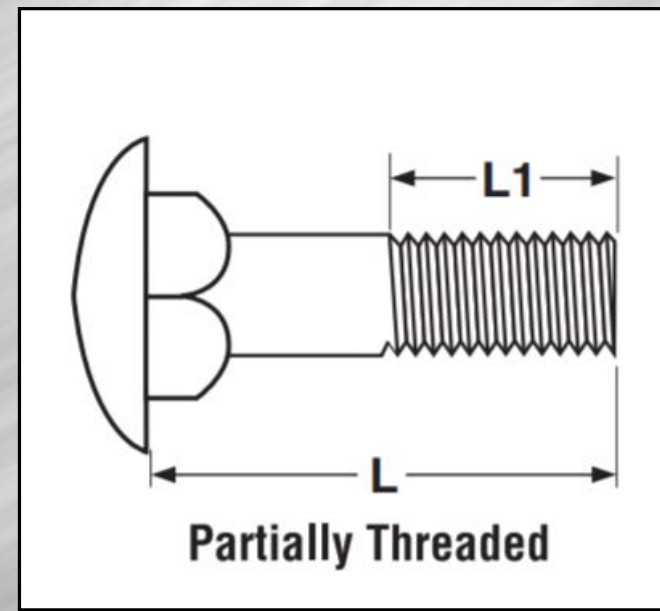
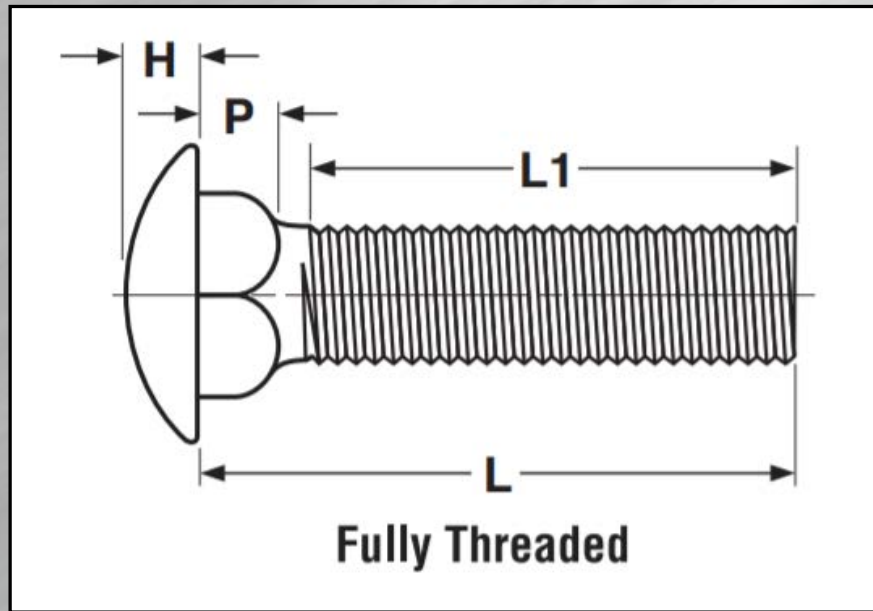




545 Basket Road • Webster, NY 14580
Toll Free • 800.691.0292 | Local • 585.265.1990 | Fax • 585.265.6678
sales@fastenersdirect.com
www.fastenersdirect.com

METRIC BOLTS - CARRIAGE BOLTS, SQUARE NECK (LARGE) DIN 603 FULLY THREADED





545 Basket Road • Webster, NY 14580
 Toll Free • 800.691.0292 | Local • 585.265.1990 | Fax • 585.265.6678
 sales@fastenersdirect.com
 www.fastenersdirect.com

METRIC BOLTS - CARRIAGE BOLTS, SQUARE NECK (LARGE) DIN 603 FULLY THREADED

Nominal Diameter (mm)	Pitch (mm)	O		C	P		A		H		Thread Length ≤125	Thread Length >125 & ≤200	Thread Length >200
		Square Width Across Flats		Square Width Across Corners	Square Depth		Head Diameter		Head Height		Ref	Ref	Ref
		Max	Min	Min	Max	Min	Max	Min	Max	Min	Ref	Ref	Ref
M5	0.80	5.48	4.52	5.90	4.10	2.90	13	11.90	3.10	2.50	16	20	-
M6	1.00	6.48	5.52	7.20	4.60	3.40	16	14.90	3.60	3.00	18	24	-
M8	1.25	8.58	7.42	9.60	5.60	4.40	20	18.70	4.80	4.00	22	28	41
M10	1.50	10.58	9.42	12.20	6.60	5.40	24	22.70	5.80	5.00	26	32	45
M12	1.75	12.70	11.30	14.70	8.8	7.20	30	28.70	6.80	6	30	36	49
M16	2.00	16.70	15.30	19.90	12.90	11.10	38	36.40	8.90	8.00	38	44	57
M20	2.50	20.84	19.16	24.90	15.90	14.10	46	44.40	10.90	10	46	52	65

Tolerance on Length	20-30mm: +/- 1.05	35-50mm: +/- 1.25	55-80mm: +/- 1.50	
	90-120mm: +/- 1.75	130-150mm: +/- 2.00	160-180mm: +/- 4.00	200mm: +/- 4.60



545 Basket Road • Webster, NY 14580
 Toll Free • 800.691.0292 | Local • 585.265.1990 | Fax • 585.265.6678
 sales@fastenersdirect.com
 www.fastenersdirect.com

METRIC BOLTS - CARRIAGE BOLTS, SQUARE NECK (LARGE) DIN 603 FULLY THREADED

Description	A round head, self-anchoring bolt with a square neck under the head and a metric thread pitch.	
Applications / Advantages	The square neck is designed to keep the bolt from turning as a nut is tightened.	
Material	Steel	Stainless
	Class 4.6 Carriage Bolts shall be made from a carbon steel which conforms to the following composition: <ul style="list-style-type: none"> • Carbon: 0.55% maximum • Phosphorus: 0.05% maximum • Sulfur: 0.06% maximum 	A2-50 and A4-50
Hardness	Rockwell B 67 - 99.5 (Vickers HV 120-250)	-
Yield Strength	240 N/mm ² Minimum	30,450 psi.
Tensile Strength	400 N/mm ² minimum	72,500 psi.
Plating	-	Stainless carriage bolts typically are supplied without additional finishes.